



---

Tips for easy  
specification

---

# Healthcare

Specification Guide  
to Floors & Walls Protection

**Gerflor**<sup>®</sup>

A modern radiology waiting area. On the left, a reception desk with a woman in blue scrubs talking on a phone. The wall behind her is light green with the word "RADIOLOGY" in green. The hallway has a wooden floor, green cushioned wooden benches, and a wall mural of birch trees. The ceiling has circular recessed lights and air vents.

**RADIOLOGY**

**A new level  
of innovation,  
quality, service  
& teamwork**

---

# Gerflor & SPM The Healthcare Specialists

---

With over 80 years' combined experience in the healthcare sector, together we have built an unrivalled reputation for quality and service.

The Gerflor group is well known as a credible and valued supplier of complete flooring solutions designed specifically for the healthcare market. The constraints of hygiene, slip resistance and acoustic qualities are part of mandatory characteristics for this sector. Our expertise allows us to offer numerous flooring products suitable for all areas of a healthcare facility. Whilst maintaining the technical performance and the design aspect of our floorcoverings, we manufacture our ranges with the environment in mind as well as the health and wellbeing of end users. We have recognised brands ideal for healthcare facilities including our Mipolam, DLW, Taralay, Taraflex® and Tarasafe flooring ranges.

SPM is a french manufacturer specialist in wall protection and handrails for nearly 40 years. SPM, a Gerflor Group company, develops innovative and decorative solutions to protect, improve and ensure the sustainability of buildings open to the public. Thanks to the wide range of solutions and designs, SPM is able to offer wall protection, corner protection, handrails and door protection solutions that suits the healthcare facilities' standards and needs.



**With over 80  
years' combined  
experience in the  
healthcare sector**

---

MIPOLAM  
TARASAFE  
TARAFLEX®  
DLW®  
TARALAY  
CREATION LVT

SPM WALL PROTECTION  
CORNER PROTECTION  
HANDRAILS  
DOOR PROTECTION  
BED HEAD PROTECTION  
INDUSTRIAL PROTECTION



# Our tried and trusted Healthcare Solutions

OUR FLOOR AND WALL SOLUTIONS CONTRIBUTE TO A CLEAN AND SAFE BUILDING ENVIRONMENT.



# Gerflor Services

## TECHNICAL & SPECIFICATION SUPPORT SPECIALISTS

Gerflors' dedicated Healthcare specialists are able to assist you with all your specification needs. Whether it's a new build or refurbishment project we have the expertise and innovations to meet all budgets. Hand in hand with our partners, we work together to propose the optimum solution for the clients needs utilising the most appropriate safe, hygienic and sustainable solutions for the specific applications. We don't stop at just providing specification advice, we can also provide a free site survey, we will visit, assess and audit the facility and make improvement to future proof the building interiors.

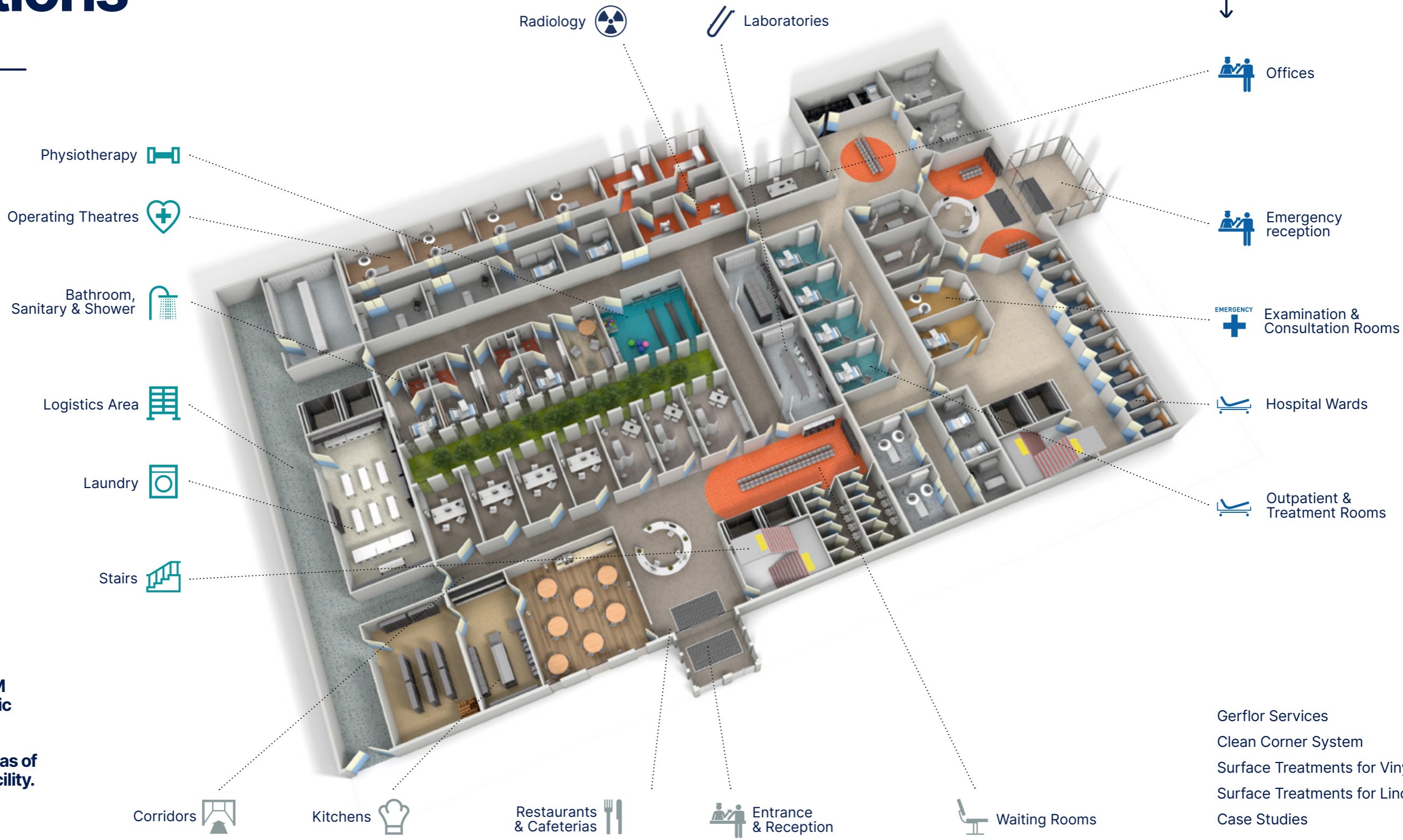
The Technical Support team is available to offer advice on the specification and installation of products, including guidance on the latest healthcare building standards and legislation. Be rest assured that Gerflor has a world class pedigree of products that are tried and trusted and deliver each and every time, all backed up by a network of technical, specification and customer support teams.



## SAMPLING SUPPORT SERVICES FOR EVERY NEED

We offer a free sample service for all our healthcare clients. Whether it's a range overview binder, loose sample (standard or bespoke), supporting literature or if it is something bespoke you need like a mood board or test material, contact us and we will aim to supply the sample for your required need. To request an actual sample, literature or anything else, please contact a local expert through the local website depending on your location.

# Comprehensive Healthcare Solutions



Click on icon to get the ideal specification

The Gerflor & SPM ranges are hygienic and safe, our solutions are suitable for all areas of the healthcare facility.

# Entrance & Reception Areas

Key considerations when selecting Flooring and Wall Protection products for Entrance & Reception Areas

- ✓ A bright, calm and welcoming environment
- ✓ Resistance to heavy traffic
- ✓ Good slip resistance on floors
- ✓ Practical in design to facilitate building access
- ✓ Protecting walls and corners that are vulnerable to damage
- ✓ Zoning and navigation assistance

## Complementary Products

Capping strip\*

Cove former\*

PVC Design Skirting\*\*

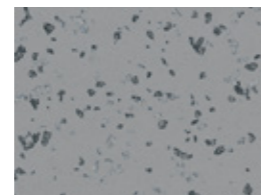
Entrance matting

\*Applicable for Premium only  
 \*\*Applicable for Creation 70 LVT only

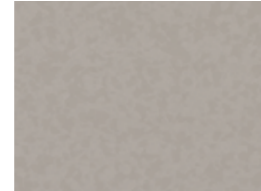
## RESILIENT FLOORING

### PREMIUM COMPACT

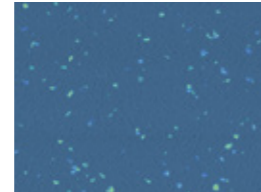
Perfect for extreme traffic resistance, comes with the [Evercare™](#) surface treatment for an unrivaled level of chemical and stain resistance.



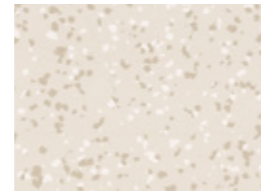
2751 Slam



4350 Elefant



4476 Wattaru



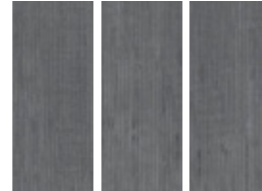
8386 Boa Vista

### CREATION 70

Best in Class LVT for a warm and contemporary finish for front of house applications, suitable for heavy foot traffic.



0577 Albion



0561 Carassi



0360 Deep Forest



0535 Douglas

## WALL PROTECTION

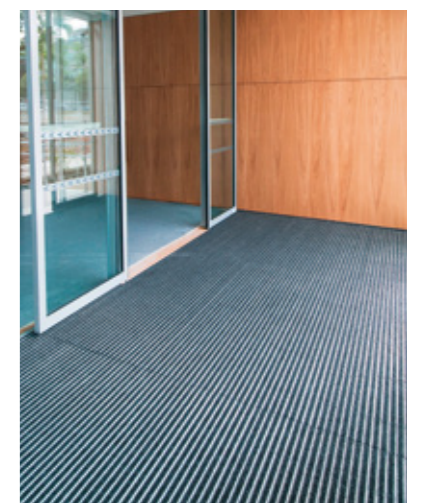
Waiting areas are often subject to scuffs and scrapes from tables, chairs and other moveable objects. Corner & edges are also vulnerable to damage from deliveries and other wheeled traffic entering the building.



- 1 Decoprint (print option) - [click here](#)
- 2 Linea' Touch handrail - [click here](#)
- 3 Decowood - [click here](#)
- Profila Corner Guard - [click here](#)
- Contact Protection plate - [click here](#)

## ENTRANCE MATTING

An effective barrier matting system, when correctly specified, will help to minimise the risk of slip accidents caused by wet flooring & reduce maintenance costs in your building.



# Waiting rooms

Key considerations when selecting Flooring and Wall Protection for Waiting Rooms

- ✓ A bright calm and welcoming environment
- ✓ Resistance to heavy traffic
- ✓ Good slip resistance on floors
- ✓ Practical in design to facilitate building access
- ✓ Protecting walls and corners that are vulnerable to damage
- ✓ Zoning and navigation assistance

## Complementary Products

Capping strip

Cove former

Trims

Pre-formed skirting HSLA\*

\*Applicable for DLW Colorette only

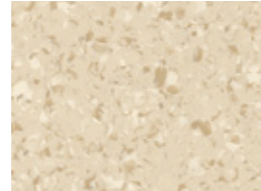
## RESILIENT FLOORING

### MIPOLAM AFFINITY

Palette of 50 non directional colours for freedom of design. Treated with [Evercare™](#) surface for easy maintenance.



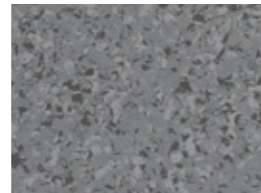
4430 Pearl Grey



4424 Smoked Opal



4417 Aquamarine



4434 Cast Iron

### DLW COLORETTE

Palette of 19 vivid colours to awaken any interior. Best in class micro-scratch and stain resistance thanks to [Neocare™](#) finish.



0059 Stone Grey



0132 Spicy Green



0170 Kumquat Orange



0123 Poppy Blue

## WALL PROTECTION SYSTEMS

Waiting areas are often subject to scuffs and scrapes from chairs and other moveable objects. Corners and edges are also vulnerable due to high levels of people and wheeled traffic.



1 Decochoc - [click here](#)

2 Protecta Corner Guard - [click here](#)

3 Linea Punch protection rail - [click here](#)

4 Mural Ultra Design

# Corridors

Key considerations when selecting Flooring and Wall Protection for Corridors

- ✓ Selected products need to deal with heavy traffic both pedestrian and wheeled
- ✓ Products should offer zoning and navigation assistance
- ✓ Flooring must be slip resistant and be able to cope with heavy rolling loads
- ✓ Robust Wall Protection system to protect vulnerable walls and corners
- ✓ Handrails for guidance and support

## Complementary Products

Capping strip

Cove former

Trims

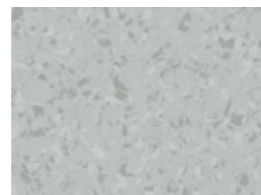
Pre-formed skirting HSLA\*

\*Applicable for DLW Colorette only

## RESILIENT FLOORING

### MIPOLAM AFFINITY

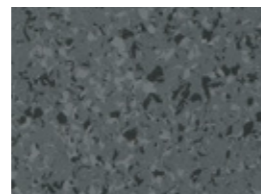
High performance vinyl flooring suitable for heavy duty traffic and rolling loads. Treated with [Evercare™](#) surface for easy maintenance.



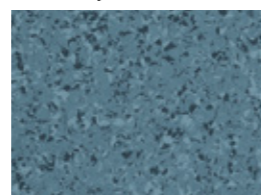
4429 Grey Opal



4401 Quartz



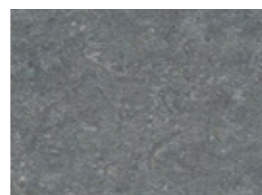
4459 Grey Storm



4466 Thistle

### DLW MARMORETTE

High performance linoleum flooring suitable for heavy duty traffic for hardworking spaces. Best in class micro-scratch and stain resistance thanks to finish.



0050 Quartz Grey



0253 Pebble Grey



0132 Lime Green



0136 Turquoise Bay

## WALL PROTECTION SYSTEMS

Corridors and circulation areas are amongst the busiest parts of a building and often have to deal with a heavy flow of both pedestrian and wheeled traffic, which then filters into other parts of the building. This high level of activity often requires a robust protection system in place to protect vulnerable walls and corners from scuffs and scrapes and direct impact damage.

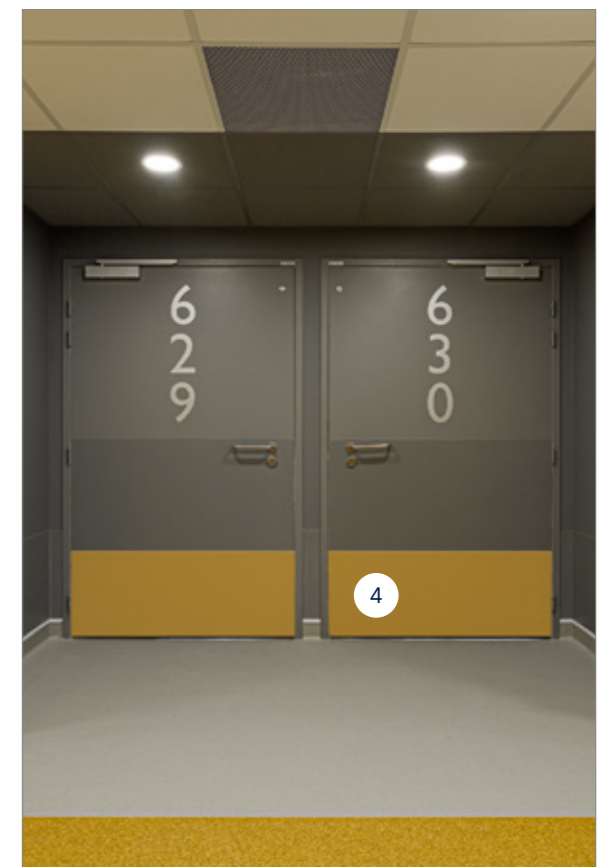


1 Escort'Duo & Linea'Duo rails - [click here](#)

2 Protecta Corner Guard - [click here](#)

3 Protection rail - [click here](#)

4 Contact Protection Plate - [click here](#)





# Restaurants & Cafeterias

Key considerations when selecting Flooring and Wall Protection products for Restaurants & Cafeterias

- ✓ A bright, calm and welcoming environment
- ✓ Products that promote hygiene and infection control
- ✓ Quiet and comfortable underfoot
- ✓ Easy clean and low maintenance products
- ✓ Protect walls from damage caused by mobile equipment

## Complementary Products

Capping strip\*

Cove former\*

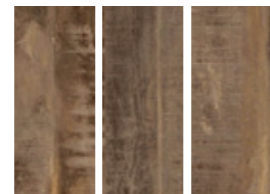
PVC Design Skirting\*\*

\*Applicable for Premium only  
 \*\*Applicable for Creation 70 LVT only

## RESILIENT FLOORING

### CREATION 70

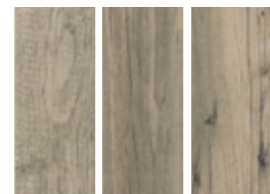
Best in Class LVT for a warm and contemporary finish for front of house applications, suitable for heavy foot traffic.



0800 Toasted Wood Roadster



1056 Onka Pearl



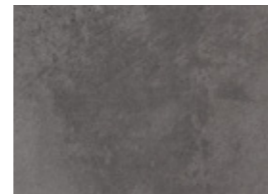
0358 Moon Island



0797 Cervino Oak Beige

### TARALAY IMPRESSION COMPACT

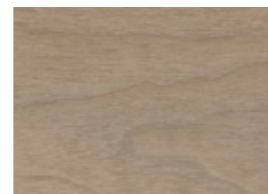
The ideal solution for heavy traffic areas and where indentation resistance is required.



1057 Riverside



0725 Sycamore Light Brown



0721 Charme Natural



0745 Metal

## WALL PROTECTION SYSTEMS

Moveable equipment like catering trolleys, tables and chairs can cause scuffs and scrapes to walls. Consider easy to clean surfaces and corner guards to protect walls and corners.



1 Decoprint (print option) - [click here](#)

2 Decochoc - [click here](#)

Linea' Flex Corner Guard - [click here](#)

# Kitchens

Key considerations when selecting Flooring and Wall Protection for Kitchens

- ✓ Good slip resistance
- ✓ Resistance to heavy traffic
- ✓ Quiet and comfortable underfoot
- ✓ Easy clean walls and low-cost maintenance
- ✓ Smooth and impervious walls to maintain food hygiene standards

## Complementary Products

Capping strip

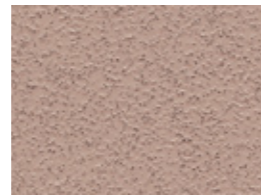
Cove former

Trims

## RESILIENT FLOORING

### TARASAFE SUPER

A safety flooring with R12 slip resistance & meets +36 HSE guidelines. Available with a 12 year warranty for peace of mind.



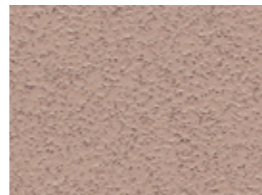
7386 Savana



7767 Dove Grey

### TARASAFE PLUS

A safety flooring with R10 slip resistance & meets +36 HSE guidelines. Available with a 12 year warranty. Treated with Sparclean, The most durable treatment on the market



7386 Savana



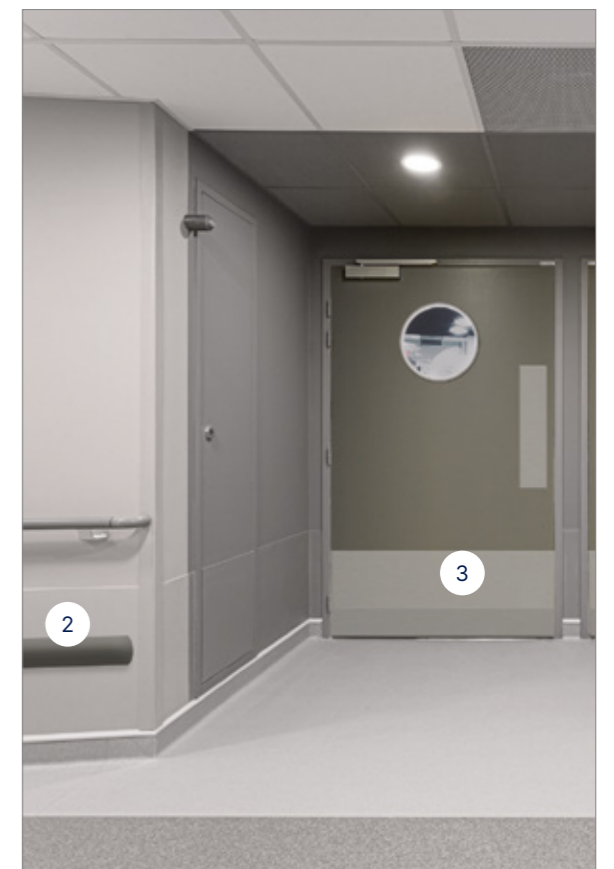
7731 Marbre



7767 Dove Grey

## WALL PROTECTION SYSTEMS

Commercial kitchens and food preparation areas require frequent and thorough cleaning to maintain food hygiene standards. Smooth and impervious surfaces are recommended for kitchen walls as an alternative to traditional ceramic tiles and grouting that can harbour bacteria and crack under impact.



1 Decoclean - [click here](#)

2 Impact rail - [click here](#)

3 Plac'inox - [click here](#)

Mural Ultra Design

# Offices

Key considerations when selecting Flooring and Wall Protection products for Offices Areas

- ✓ A bright, calm and welcoming environment
- ✓ High acoustic features for better work environment
- ✓ Products that promote hygiene and infection control
- ✓ Quiet and comfortable underfoot
- ✓ Easy clean and low maintenance products
- ✓ Protect walls from damage caused by tables and chairs

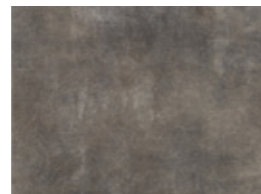
Complementary Products

Entrance and Reception Area

## RESILIENT FLOORING

### CREATION 55

Best in Class LVT for a warm and contemporary finish for front of house applications, suitable for medium foot traffic.



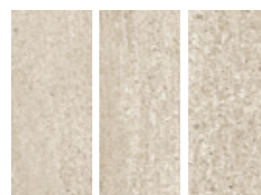
0373 Silver City



0347 Ballerina



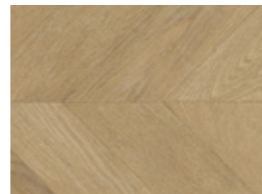
0848 Swiss Oak Beige



1287 Salento Light Grey

### TARALAY IMPRESSION COMPACT

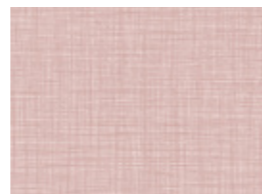
The ideal solution for heavy traffic areas and where indentation resistance is required.



1110 Rivau Nature



0725 Sycamore Light Brown



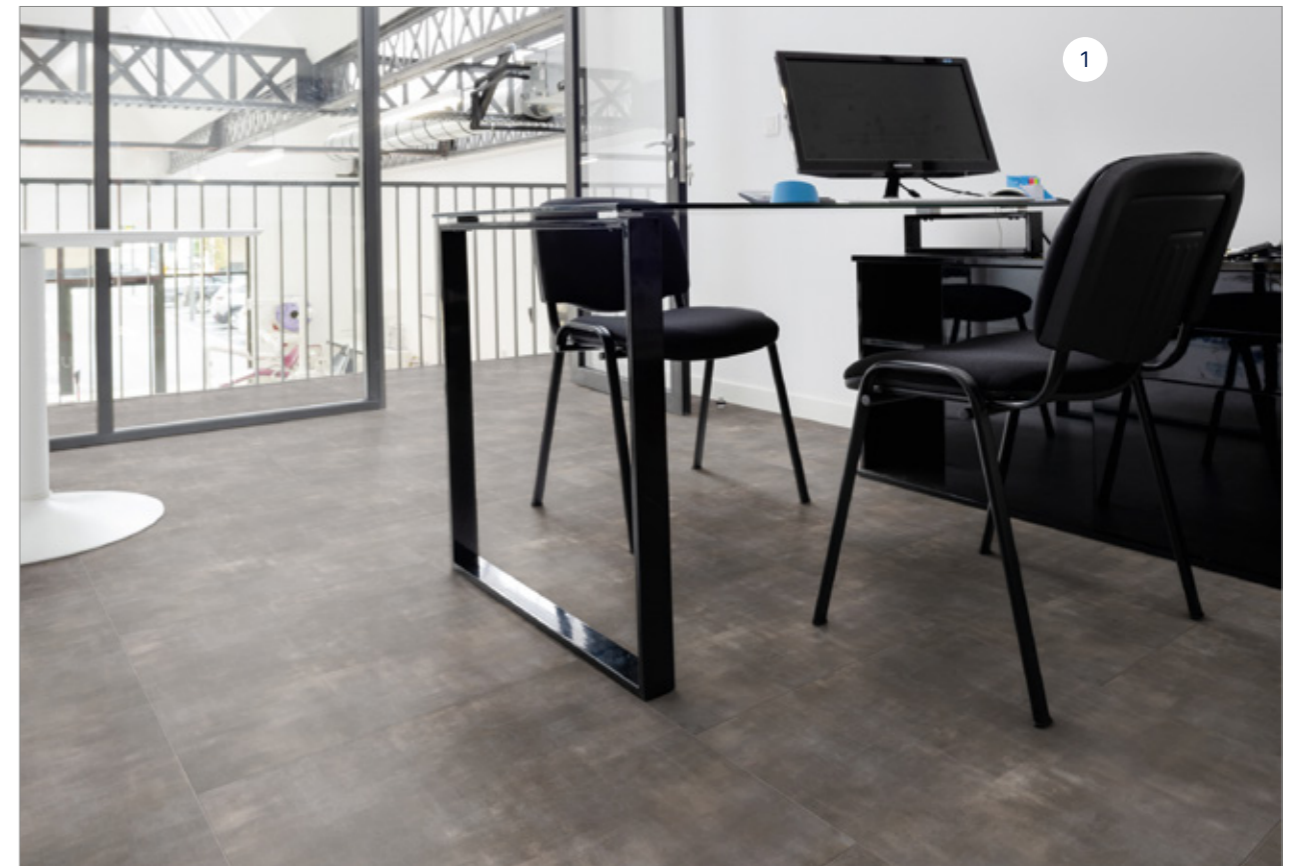
1066 Finesse Poudre



0745 Metal

## WALL PROTECTION

Waiting areas are often subject to scuffs and scrapes from tables, chairs and other moveable objects. Corner & edges are also vulnerable to damage from deliveries and other wheeled traffic entering the building.



1 Decoprint (print option) - [click here](#)

# Emergency Reception

Key considerations when selecting Flooring and Wall Protection products for A&E Receptions

- ✓ A bright, calm and welcoming environment
- ✓ Zoning and navigation assistance
- ✓ Resistance to heavy traffic
- ✓ Good slip resistance
- ✓ Easy clean and low maintenance
- ✓ Protect walls from mobile equipment that can cause damage
- ✓ Handrails to offer support and guidance

Complementary Products

Capping strip

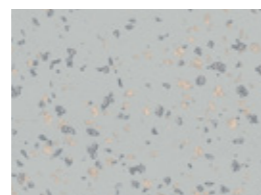
Cove former

Trims

## RESILIENT FLOORING

### PREMIUM COMPACT

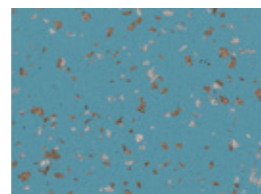
The ultimate flooring solution for rolling load traffic for extremely busy areas. Treated with [Evercare™](#) surface for easy maintenance.



2750 Ellipse



3791 Slate Grey



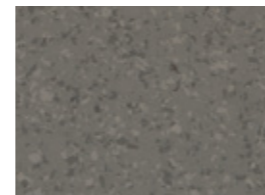
8627 Allegorie



4009 Tufoa

### MIPOLAM SYMBIOZ™

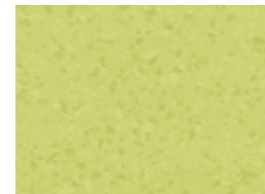
High performance homogeneous flooring treated with [Evercare™](#) for outstanding chemical and stain resistance.



6044 Sea Storm



6001 Cotton



6027 Acacia



6032 Sunshine

## WALL PROTECTION SYSTEMS

Waiting areas are often subject to scuffs and scrapes from chairs and other moveable objects. Corners and edges are also vulnerable from high levels of people and wheeled traffic.



1 Decoprint (print option) - [click here](#)

2 Linea' Touch+ handrail - [click here](#)

3 Decowood - [click here](#)

4 Profila Corner Guard - [click here](#)

Contact Protection plate - [click here](#)

# Examination & Consultation Rooms

Key considerations when selecting Flooring and Wall Protection products for Examination and Consultation Rooms

- ✓ A bright, calm and welcoming environment
- ✓ Quiet and comfortable underfoot
- ✓ Good slip-resistance
- ✓ Easy cleaning and low maintenance
- ✓ Protect walls and corners from damage caused by mobile equipment

## Complementary Products

Capping strip

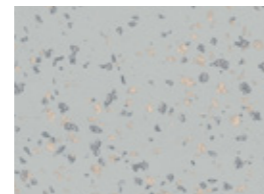
Cove former

Trims

## RESILIENT FLOORING

### PREMIUM COMFORT

With good acoustic and shock absorption properties and safe underfoot cushioning available in a mix of colours & designs. Treated with Evercare™ surface for easy maintenance.



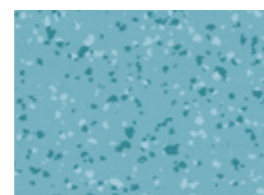
2750 Ellipse



4349 Angora



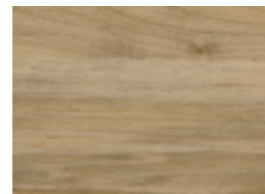
4001 Ofu



4477 Maceio

### TARALAY IMPRESSION COMFORT

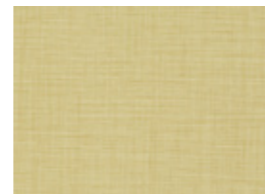
Excellent 19dB sound rating, available in a mix of vibrant colours and wood effect designs. Outstanding indentation resistance and recovery. Treated with Protecsol®2 surface for easy maintenance.



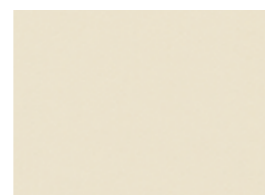
0727 Sycamore Vanilla



0680 Infinity Greige



1065 Finesse Paille



0848 Uni Matt White

## WALL PROTECTION SYSTEMS

Examination and consulting rooms are subject to high volumes of activity. Hospital staff are regularly tasked with manoeuvring beds, wheelchairs, mobile medical equipment, service trolleys and other wheeled traffic in confined spaces, increasing the likelihood of impact damage to walls.



1 Decochoc - [click here](#)

2 Profila Corner Guard - [click here](#)

3 Combo Bedkit - [click here](#)

# Hospital Wards

Key considerations when selecting Flooring and Wall Protection for Hospital Wards

- ✓ Products that promote hygiene and infection control
- ✓ Resistance to stains and chemicals
- ✓ Quiet and comfortable underfoot
- ✓ Good slip resistance
- ✓ Easy clean and low maintenance
- ✓ Handrails to offer support and guidance
- ✓ Protection of vital medical equipment
- ✓ Protection of vulnerable corners from wheeled traffic and mobile beds

Complementary Products

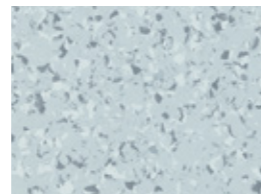
- Capping strip
- Cove former
- Trims
- Pre-formed skirting HSLA\*

\*Applicable for DLW Colorette only

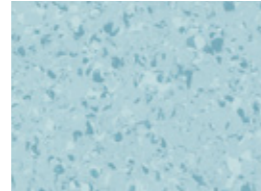
## RESILIENT FLOORING

### MIPOLAM AFFINITY

High performance vinyl flooring treated with [Evercare™](#) surface treatment for easy cleaning and maintenance.



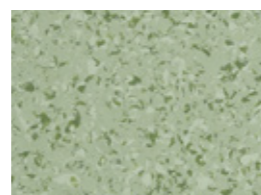
4410 Violet Grey



4417 Aquamarine



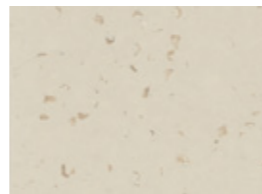
4446 Blue Ocean



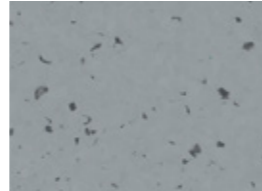
4407 Spearmint

### MIPOLAM PLANET

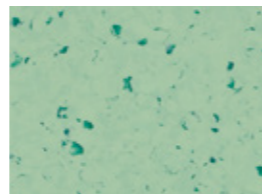
High performance vinyl flooring treated with [Evercare™](#) surface treatment for easy cleaning and maintenance.



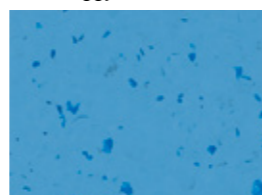
5404 Vanilla Sky



5430 Sideral Grey



5417 Foggy Hill



5436 Tiger Eye

## WALL PROTECTION SYSTEMS

Ward and hospital accommodation is subject to high volumes of activity. Hospital staff are regularly tasked with manoeuvring beds, wheelchairs, mobile medical equipment, service trolleys and other wheeled traffic in relatively confined spaces, increasing the likelihood of impact damage to walls, corners and doors.



1 Decochoc - [click here](#)

2 Escort Duo Handrail - [click here](#)

3 Impact protection rail - [click here](#)

Cornea Corner Guard - [click here](#)

Contact Protection plate - [click here](#)

Combo Bedkit - [click here](#)

# Outpatient & Treatment rooms

Key considerations when selecting Flooring and Wall Protection products for Outpatient & Treatment Rooms

- ✓ A bright, calm and welcoming environment
- ✓ Products that promote hygiene and infection control
- ✓ Quiet and comfortable underfoot
- ✓ Easy clean and low maintenance products
- ✓ Protect walls from damage caused by mobile equipment
- ✓ Protection of vital medical equipment

## Complementary Products

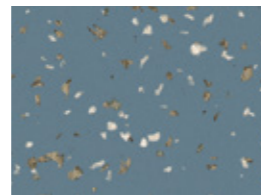
- Capping strip
- Cove former
- Trims
- Pre-formed skirting HSLA\*

\*Applicable for DLW Colorette only

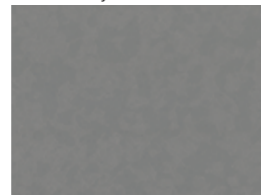
## RESILIENT FLOORING

### PREMIUM COMFORT

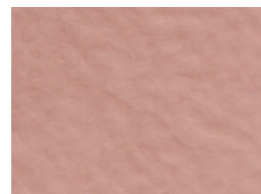
High performance flooring with excellent acoustic and shock absorption properties and safe underfoot cushioning. Treated with Evercare™ surface for easy maintenance.



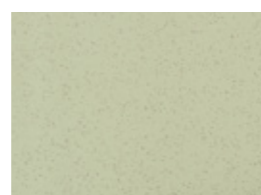
8626 Poesy Rime



3791 Osmoz Slate Grey



2152 Octave



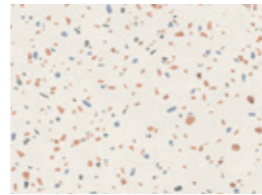
4045 Dalupiri

### TARALAY IMPRESSION COMFORT

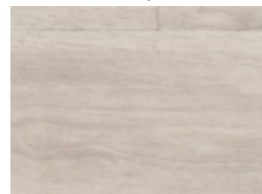
The ideal solution for medium traffic areas where indentation resistance and good acoustics are required. Treated with ProtecSol®2 surface for easy maintenance.



0727 Sycamore Vanilla



1060 Terrazo Napoli



0373 Noma Ice



0775 Blue

## WALL PROTECTION SYSTEMS

Outpatient and treatment rooms are subject to high volumes of activity. Hospital staff are regularly tasked with manoeuvring beds, wheelchairs, mobile medical equipment, service trolleys and other wheeled traffic in confined spaces, increasing the likelihood of impact damage to walls.



1 Combo Bedkit - [click here](#)

2 Decochoc - [click here](#)

Corner protection - [click here](#)

# Radiology

Key considerations when selecting Flooring and Wall Protection products for Imaging Areas

- ✓ A bright, calm and welcoming environment
- ✓ Limits electrostatic charge
- ✓ Quiet and comfortable underfoot
- ✓ Low resistance to rolling loads
- ✓ Impervious surfaces that are smooth and easy to clean
- ✓ Protect walls from damage caused by mobile medical equipment

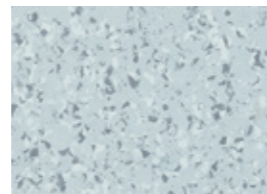
## Complementary Products

Gerflor Clean Corner System  
Capping strip  
Cove former  
Trims

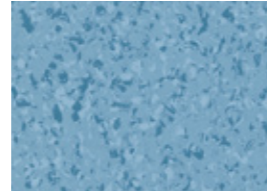
## RESILIENT FLOORING

### MIPOLAM EL7

Static-dissipative flooring available in a palette of 10 semi-directional designs coordinated to the Mipolam Affinity range. Treated with Evercare™ surface for easy maintenance.



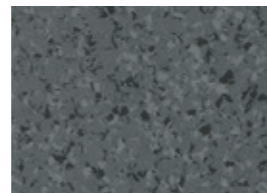
4110 Violet Grey



4116 Sapphire



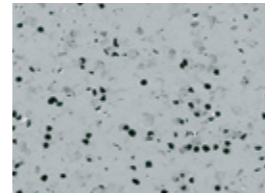
4132 Citrine



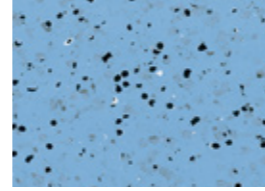
4159 Grey Storm

### MIPOLAM EL5

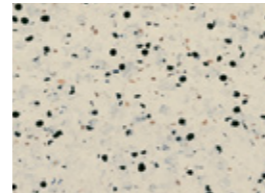
Permanent conductive flooring available in a palette of 6 colours in a non directional design. Treated with Evercare™ surface for easy maintenance.



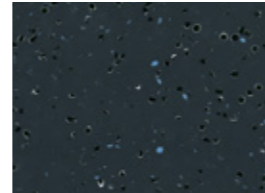
0352 Grey



0354 Blue



0353 Beige



0351 Black

## WALL PROTECTION SYSTEMS

Mobile equipment is frequently moved around in imaging areas increasing the potential for damage. These areas require impervious surfaces that are smooth and easy to clean with a resistance to impact damage.



1 Decoclean - [click here](#)

2 Profil' Inox Corner Guard - [click here](#)

Mural Ultra Design



# Laboratories

Key considerations when selecting Flooring and Wall Protection for Laboratories

- ✓ Hygiene and infection control
- ✓ Resistance to stains and chemicals
- ✓ Good slip resistance
- ✓ Quiet and comfortable underfoot
- ✓ Easy clean and low-cost maintenance

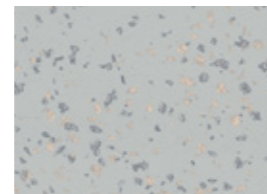
## Complementary Products

Gerflor Clean Corner System  
Capping strip  
Cove former  
Trims

## RESILIENT FLOORING

### PREMIUM COMPACT

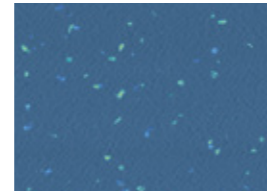
The ultimate flooring solution for rolling load traffic for extremely busy areas. Treated with [Evercare™](#) surface for easy maintenance.



2750 Poesy Ellipse



3791 Osmoz Slate Grey



4476 Wattaru



8386 Boa Vista

### MIPOLAM AFFINITY

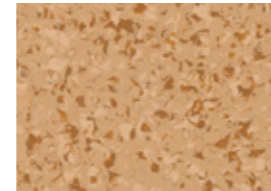
High performance flooring with good abrasion resistance & [Evercare™](#) surface treatment for easy cleaning.



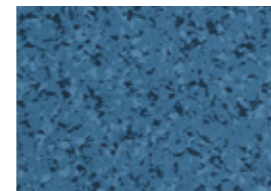
4412 Tundra



4402 Yuki



4425 Amber



4436 Santorini

## WALL PROTECTION SYSTEMS

Strict hygiene standards in laboratories require robust building materials that can withstand extensive cleaning. Mobile trolleys are frequently moved around increasing the potential damage to walls and corners.



1 Decoclean - [click here](#)

Plac'Inox - [click here](#)

Decochoc - [click here](#)

Protecta Corner Guard - [click here](#)

Impact protection rail - [click here](#)

Door Protection - [click here](#)

# Operating Theatres & Clinical Areas

Key considerations when selecting Flooring and Wall Protection for Operating Theatres & Clinical Areas

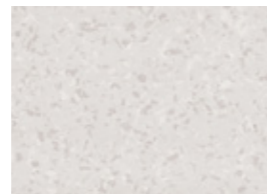
- ✓ Hygiene and infection control
- ✓ Easy to clean walls and floors
- ✓ Resistance to stains and cleaning chemicals
- ✓ Flooring to have electrostatic control
- ✓ Walls protected from impact damage

## Complementary Products

- Gerflor Clean Corner System
- Capping strip
- Cove former
- Trims

## RESILIENT FLOORING

**MIPOLAM SYMBIOZ™**  
High performance homogeneous flooring treated with Evercare™ for outstanding chemical and stain resistance.



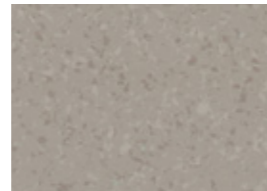
6008 Calico



6009 Grey Stone

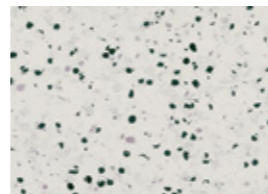


6006 Blue Sky

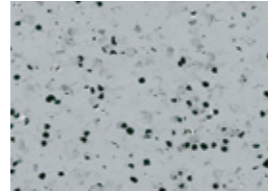


6039 Pebble

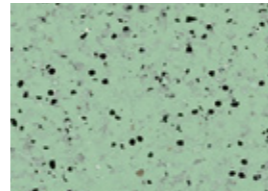
**MIPOLAM EL5**  
High performance ESD conductive flooring treated with Evercare™ for excellent resistance to stains and chemicals.



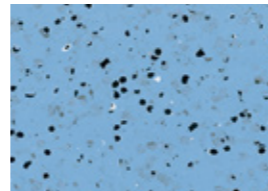
0350 Light Grey



0352 Grey



0355 Green



0354 Blue

## WALL PROTECTION SYSTEMS

Strict hygiene standards in intensive healthcare environments require robust building materials that can withstand intensive cleaning. Consider impervious surfaces that are smooth and easy to clean, with a resistance to impact damage.



1 Decoclean - [click here](#)

Impact protection rail - [click here](#)

Cornea Corner Guard - [click here](#)

Mural Ultra Design

# Physiotherapy Areas

Key considerations when selecting Flooring and Wall Protection products for Physiotherapy Areas

- ✓ A bright, calm and welcoming environment
- ✓ Products that promote hygiene and infection control
- ✓ Quiet and comfortable underfoot
- ✓ Easy clean and low maintenance products
- ✓ Protect walls and corners from damage caused by mobile equipment

## Complementary Products

E120 Adhesives  
Cove Formers & Caps  
BE TX threshold

## RESILIENT FLOORING

### TARAFLEX® MULTI-USE

Designed with a high resistance to tables and chairs, the 6,1mm thick multi-purpose vinyl flooring is the perfect solution for sports and non-sports activities.



7762 Pure Concrete Blue



6180 Red



6557 Forest Green



5742 Wood Oak

### TARAFLEX® EVOLUTION

This 7,5mm thick flooring is ideal for a variety of sports and leisure activities from children to professional players. The choice for all international events when installed over a sub-construction.



6431 Teal



6211 Gold



0047 Mallow



4345 Ecrú

## WALL PROTECTION SYSTEMS

Patients are regularly wheeled in an out of physiotherapy areas which risk gouging wall surfaces if a collision were to occur. Wall and corners need to be protected from impact damage.



1 Decochoc - [click here](#)

2 Protecta Corner Guard - [click here](#)

Escort Handrail - [click here](#)

# Bathroom, Sanitary & Shower

Key considerations when selecting Flooring and Wall Protection for Bathroom & Shower Rooms

- ✓ Good slip resistance
- ✓ Watertight floors and walls
- ✓ Resistance to stains and chemicals
- ✓ Easy clean and low-cost maintenance

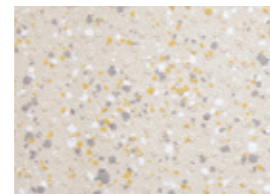
## Complementary Products

- Cove former
- Diminishing profile
- Shower Threshold Profile
- Vertical Drain
- Horizontal Drain

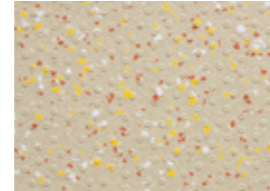
## RESILIENT FLOORING

### TARASAFE ULTRA H<sub>2</sub>O

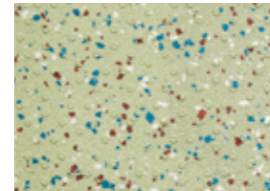
High performance slip resistant safety flooring for wet and dry, barefoot and shod applications, meets +36 HSE guidelines.



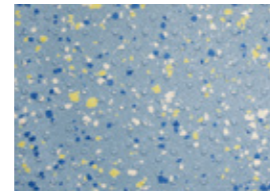
7325 Seashore



7314 Sand



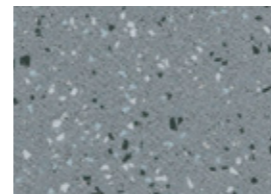
7513 Seagrass



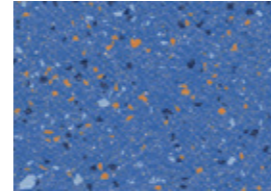
7418 Marine

### TARASAFE ULTRA

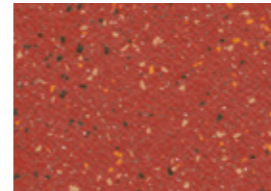
Outstanding safety flooring where slip-resistance, durability and hygienic conditions are required, meets +36 HSE guidelines. Treated with Sparclean, The most durable treatment on the market.



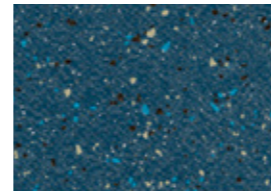
8709 Granite



4470 Sapphire



4128 Ruby



4472 Moonstone

## WALL PROTECTION SYSTEMS

Bathrooms and shower rooms are areas where cleanliness is a priority. Mural Calypso is smooth and easy to clean and offers an impermeable barrier to moisture and is an hygienic alternative to ceramic tiles, removing the need for grout which can harbour bacteria.



© Florian Mignot



1 Mural Calypso - [click here](#)

Decochoc H2O - [click here](#)

Decochoc - [click here](#)

Profila Corner Guard - [click here](#)

# Stairs

Key considerations when selecting Flooring and Stair Edging products for Healthcare environments

- ✓ Slip Resistance properties - select insert suitable for the environment
- ✓ Cleaning & Maintenance - ability to withstand harsh regimes
- ✓ Colour Contrast - achieve 30 points LRV difference between stair edging & floorcovering
- ✓ Fixing Method - install with Gradus Grip stair edging adhesive for a hygienic solution

## Complementary Products

Grooved PVC Stair Nosing Straight Angles

Stair Clip System

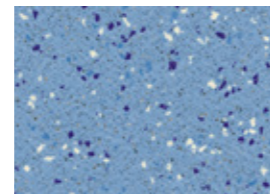
Aluminium Stair Nosing

Grooved PVC Stair Nosing

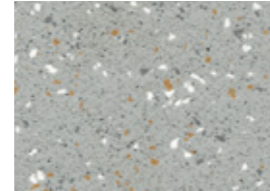
## RESILIENT FLOORING

### TARASAFE ULTRA

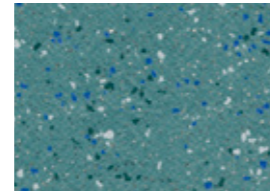
Outstanding safety flooring where slip-resistance, durability and hygienic conditions are required, meets +36 HSE guidelines. Treated with Sparclean, The most durable treatment on the market.



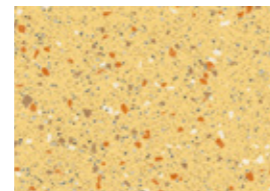
7482 Halite



8704 Pebble



4460 Topaz



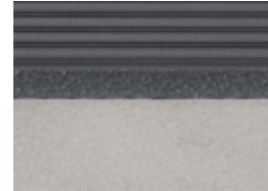
4323 Sandstone

### TARASTEP

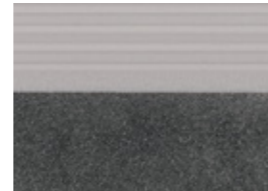
A Complete stair solution compliant with «access for all» requirements. It provides a 70% colour contrast on stair-nosing.



0701 Taupe / Gris Clair



0722 Gris Clair / Carbone



0723 Carbone / Gris Clair



0716 Ivoire / Indigo



1 Escort Handrail - [click here](#)

2 Tarastep

# Logistics Area

Key considerations when selecting Flooring and Wall Protection for Back of House Storage Areas

- ✓ Resistance to heavy rolling loads
- ✓ Resistance to heavy traffic
- ✓ Easy clean and low-cost maintenance
- ✓ Robust wall protection solution to protect the building from damage and improve safety for pedestrians

## Complementary Products

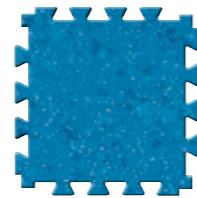
- Cove Formers & Caps
- Aluminium profile
- PVC ramp\*

\* only available for GTI MAX Connect

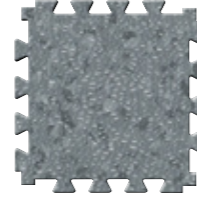
## RESILIENT FLOORING

### GTI MAX CONNECT

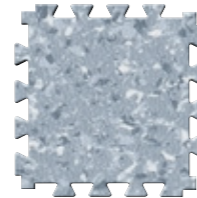
A fast renovation solution which can be installed over most existing floors where minimal sub floor preparation is required.



0230 Blue



0235 Dark Grey



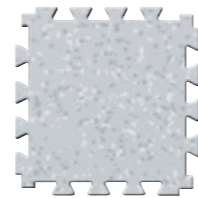
0253 Aluminium



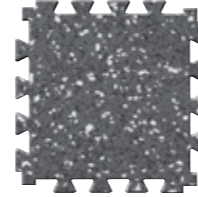
0262 Libeccio

### ATTRACTION®

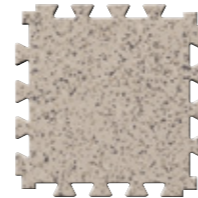
A fast track easy solution with interlocking edges which allows for rapid loose lay installation and replacement. Treated with [ProtecSol®2](#) surface for easy maintenance.



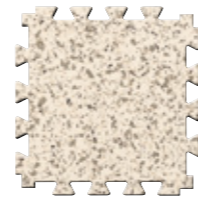
8736 Recife



2741 Brooklyn



2744 Queens Soft



2743 Central Park

## WALL PROTECTION SYSTEMS

Wheeled traffic such as industrial bins and carts can cause significant damage when accidental collisions occur. Motorised traffic including delivery vans and motorised trolleys are also potential hazards in service areas.



1 Elasto' Flex Corner Guard - [click here](#)

2 Elasto' Punch Protection Rail - [click here](#)

# Innovations for Clinical Healthcare Environments

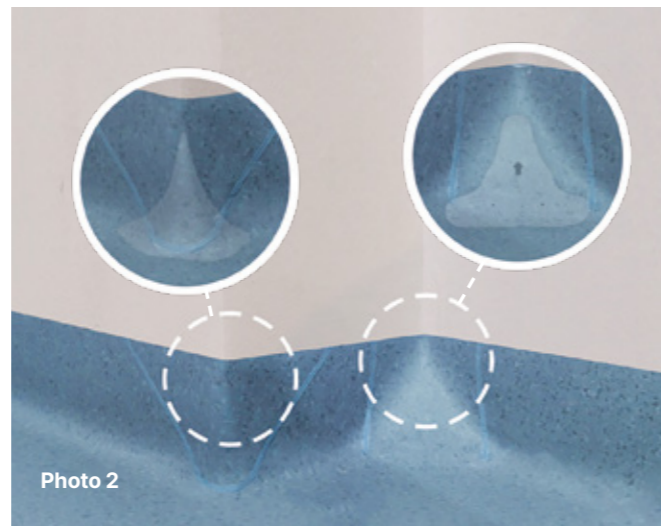
## INNOVATIVE CLEAN CORNER SYSTEM

A total and complete solution for installing corners that aids the control of contamination.

Controlling contamination in general healthcare environments as well as ultra clean areas such as burns units, pharmacies and operating theatres is always a challenge. Corners, in particular, are where most of the imperfections are found:

- Their shape makes cleaning and decontamination difficult.
- Poorly welded, they can tear or sag under the weight of traffic.
- Weakened by use, they end up losing their water-tightness.

In partnership with cleaning professionals, Gerflor has developed a innovative patented Corner System. Thanks to ultra-resistant and versatile profiles (**Photo 1**), Clean Corner System is suitable for all your projects, and delivers perfect results (**Photo 2**) with Gerflor floorings.



**Clean Corner System wins Innovation & Product Design Award**



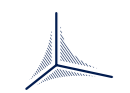
Watertight



Resistant & Durable



Hygienic



Adaptative



Esthetic

## OUTSTANDING SURFACE TREATMENTS

Our surface treatments are perfect for healthcare environments with unrivalled levels of chemical & stain resistance, reducing maintenance time and cost



• **No waxing or polishing is needed to maintain the floor appearance or color brightness**



• **Easy to maintain and no wax for life**



• **Water and detergents saving**

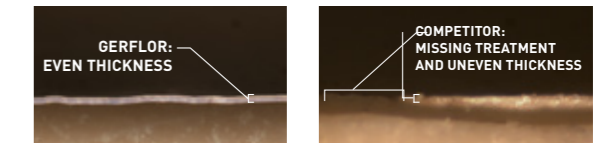
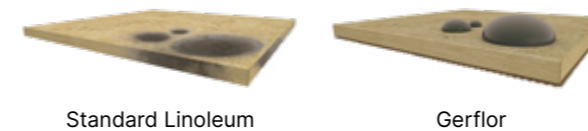
• **Lower environmental impact and carbon footprint**

• **Matt effect for enhanced and ultra-realistic design**

• **The best chemical stain resistance surface treatments**

Exclusive surface treatments approved for over 20 Years: impenetrable barrier against stains and chemicals. Longer expectancy.

Highly durable: The UV laser cross-linking provides superior durability and an even surface thickness.

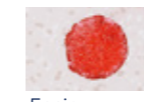


View our Clean Corner System video : [Click here](#)

### Staining Tests Before cleaning



Betadine



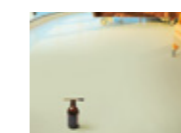
Eosin



Marker

### Results After Cleaning

Using A neutral Detergent



Stain 1: Betadine® Alcoholic Solution



Stain 2: Eosin



Stain 3: Permanent Marker®

After 5 Minutes

After 60 Minutes

After 5 Minutes

After 60 Minutes

	Evercare™ ProtecSol® 2 Neocare™	Other Homogeneous Sheets	Rubber	VCT
Stain 1: Betadine® Alcoholic Solution				
Stain 2: Eosin				
Stain 3: Permanent Marker®				

# Play with colors!

---





Gerflor International  
Tel: +33 (0)4 74 05 40 00  
Fax: +33 (0)4 74 05 03 13  
e-mail: [gerflorcontract@gerflor.com](mailto:gerflorcontract@gerflor.com)

gerflor.com / follow us   



FC Lyon B 726.580.152 - JPE - 11/2022 - Z0041401 - Prix indicatif documentaire : 4,00€

**We care / We act** Our Commitments for a Sustainable future



**CARBON FOOTPRINT\***

-20 % kg CO<sub>2</sub> equivalent/m<sup>2</sup> between 2020 and 2025



**BIOSOURCED CONTENT\*\***

10 % by 2025



**RECYCLED CONTENT**

30 % by 2025



**ADHESIVE FREE\*\*\***

35 % by 2025



**ANNUAL VOLUME RECYCLED**

60 000 t by 2025



\* Scopes 1 and 2 defined in the GHG protocol \*\* % of activity with biosourced materials \*\*\* % of activity - adhesive free solution